

## PROJECT 10

# A card and letter set for people who like surprises

What jumps out from this pop-up card isn't just an invitation to a tea party, but also a succession of fun and tasty-looking letter cards. Enhance the cards with your own original designs to create a fun surprise for the recipient.



# Material

Outer dimensions (finished envelope): 5.51" x 5.51"  
Paper – 13 kinds  
Semicircle: 2.36" x 5.13"; square: 5.51" x 5.51"  
(before welding)  
Teapot: 4.14" x 5.91"  
Computer-printed text  
Rhinestones, brad  
Decorate as desired.



When fastening the letter cards together with the brad, position the attachment points as shown in the photo and use an awl or the like to punch the holes. Brass fasteners are available in a variety of types, giving you a fun selection to choose from.

1 Make the envelope by welding together the built-in patterns of the semicircle and square.

Built-in patterns: BA-A001, BA-A055 x 4 /Function: Welding

2 Cut the other built-in pattern shapes. Create the "Tea Party" and "Cookies" text using the built-in fonts, then weld the letters together.

Built-in patterns: BA-A050 x 4, AR-A018, BA-A068 x 2, BA-A045 x 2, BA-A055 x 4, FO-A001, FO-A002 /Function: Welding

3 Use Direct Cut to scan and cut a photo of a donut.

Function: Direct Cut

4 Print out "Invitation" from a computer, then cut it using Scan to Cut Data.

Function: Scan to Cut Data

5 Glue together the cut built-in pattern pieces to make the letter cards, then decorate them with rhinestones. Also glue the cut pieces to the envelope, and attach the donut piece to it using a dab of adhesive at one stop, to serve as a fastener.

6 Fasten the letter cards together using a brass brad (split pin). Finish by folding the envelope closed with the letter cards inside.





PROJECT 11 Calendar page 23



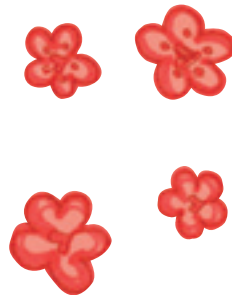
PROJECT 05 Pop-up Card and Letter Set page 11



PROJECT 12 Keepsake Box page 25



PROJECT 10 Pop-up Card page 21



PROJECT 14 Quilted Tote Bag page 29

