

PROJECT 06

Happy feelings also spring forth from this pop-up card!

As a special birthday reminder, you can fashion a card featuring a photo that pops out to delight the recipient. Enjoy thinking up your own design ideas and color schemes for embellishing this one-of-a-kind birthday message.



Material

Outer dimensions (card size): 7.95" x 10.63"

Paper – 12 kinds

Gift-box piece: 4.12" x 4.33"

Photo frame piece: 2.24" x 2.68"

Message area: 3.94" x 2.86"

Photo, ribbon, stickers

Use the ornament on page ___ (actual size).



Adjust the size of the gift-box piece so that no part of it sticks out when the card is folded closed. Adjust so that the total of the vertical length of the cut (a) plus the vertical length of the gift-box piece (b) is less than the vertical length of the card (c).

$$(a) + (b) < (c)$$

Built-in patterns: BA-A002, AR-I011

1 Make the pop-up base (inner and outer pieces).

Built-in pattern: BA-A012 x 2

2 Use Direct Cut to cut the hand-drawn flowers.

Function: Direct Cut

3 Cut the built-in pattern pieces. For the photo, use Scan to USB to scan the image, then use Background Scan to cut the data.

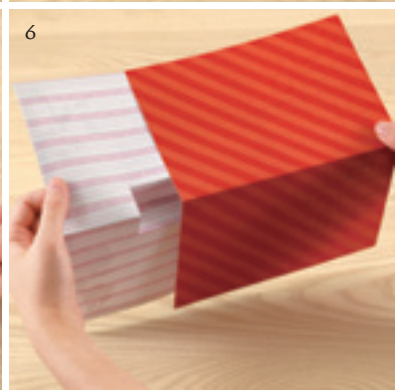
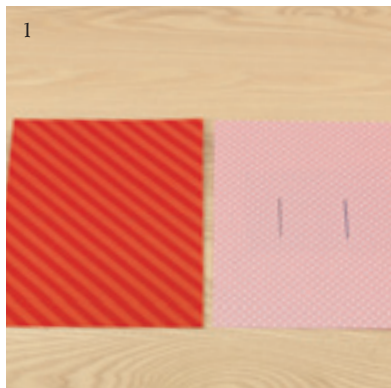
uilt-in patterns: BA-A002, AR-I011, LO-A031 x 2, AR-H025, AR-H022 x 3, AR-H023 x 2, AR-A027 x 6, AR-C023, AR-K027 /
Functions: Scan to USB, Background Scan

4 Attach the built-in pattern pieces and decorate using lace and stickers.

5 Make the message area. Cut lined paper using the built-in pattern of a square, then glue the frame piece over the square.

Built-in pattern: BA-A012

6 Attach the outer gift-box piece to the pop-up and glue it to the outer base piece.





PROJECT 11 Calendar page 23



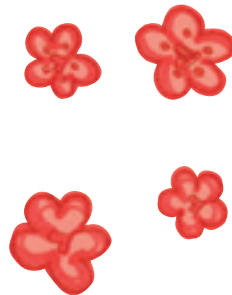
PROJECT 05 Pop-up Card and Letter Set page 11



PROJECT 12 Keepsake Box page 25



PROJECT 10 Pop-up Card page 21



PROJECT 14 Quilted Tote Bag page 29

